



**BEARS + RAPTORS  
WORKFORCE HOUSING  
EAGLE ROCK HIKE!**

©Marsha Hobert

Lounge around with the Estes Valley Land Trust this summer and learn about bears and raptors during one of our events! The land trust has two breakfasts and a picnic planned and we'd love to see you. Check out pages 3 and 4 for more details.





The mission of the Estes Valley Land Trust is to preserve and protect open space, valleys, wetlands, streams, ranch lands, and wildlife habitat in the Estes Valley and surrounding area. Lands adjacent to Rocky Mountain National Park and the Arapaho-Roosevelt National Forest are of special concern.

---

## EVLT OFFICERS & DIRECTORS

Gail Albers  
Vaughn Baker  
John Cooper  
Wanda Curry  
Art French  
Curt Gleaves  
Robin Harding  
Mark Holdt  
Charlie Johnson  
Carly Lober  
John Nolan  
Peter Sinnott

Honorary Directors  
Craig Axtell  
Leo Weber

---

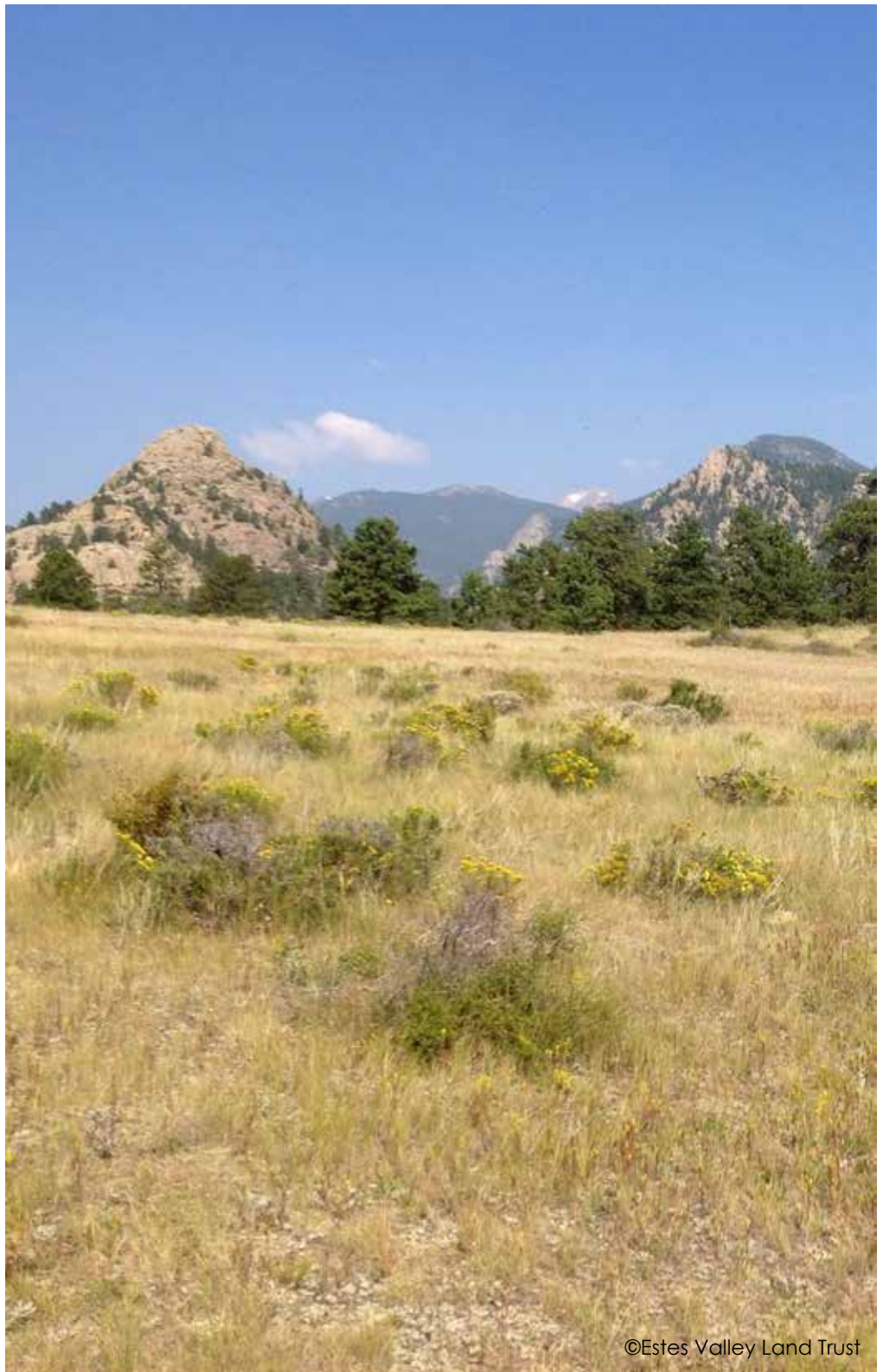
## STAFF

EXECUTIVE DIRECTOR  
Jeffrey Boring

OFFICE MANAGER  
Karen Thompson

BUSINESS MANAGER  
Karen Monks

STEWARDSHIP INTERN  
Kenzie Schmitt



©Estes Valley Land Trust

Lamy Easement with Old Man Mountain and Lumpy Ridge in background.

---

### JOIN US ON FACEBOOK

When news happens—big events or small—you will find timely posts to keep you informed.

[facebook.com/estesvlt](https://facebook.com/estesvlt)

### LEARN MORE

Get information about our conservation work, events, and everything “EVLT.”

[evlandtrust.org](https://evlandtrust.org)

# SUMMER BREAKFAST SERIES



## BEARS IN THE ESTES VALLEY

**SATURDAY, JUNE 16, 2018, 8 A.M.**

**CHASE RYLANDS,  
DISTRICT WILDLIFE MANAGER,  
COLORADO PARKS AND WILDLIFE**

What happens to problem bears? Come learn about bear ecology and habitat.

Bear Gulch Ranch  
(Hoover Conservation Easement)  
8150 Highway 7

½ Mile South of Longs Peak Rd.  
Turn East

**RSVP by 5 p.m. Monday, June 11**



## STATE OF ROCKY MOUNTAIN NATIONAL PARK

**SATURDAY, AUGUST 11, 2018, 8 A.M.**

**DARLA SIDLES, SUPERINTENDENT,  
ROCKY MOUNTAIN NATIONAL PARK**

**ESTEE RIVERA MURDOCK,  
EXECUTIVE DIRECTOR,  
ROCKY MOUNTAIN CONSERVANCY**

Learn about Park issues, upcoming projects, and how EVLT, the Park and the Conservancy can work together. Includes brief annual meeting.

Hidden Valley Recreation Area  
Rocky Mountain National Park

**RSVP by 5 p.m. Monday, August 6**

## BREAKFAST DETAILS

- Reservations required. Note RSVP deadlines above.
- To make reservations, email first and last name for each reservation to [evlt@evlandtrust.org](mailto:evlt@evlandtrust.org) or call 970-577-6837 (leave a message if needed).
- Breakfast will be catered by The Other Side restaurant and will include an egg entree, meat, fresh fruit, pastries, juice, and hot coffee.
- \$15 per person (\$5 for K-12 students), payable by cash or check at the event.
- Breakfast events are outdoors. Please bring a chair, jacket, sunglasses, hat, sunscreen and drinking water for after breakfast.



# SUMMER PICNIC WITH **RAPTORS**



## IF YOU GO

**Where:** Hermit Park  
Open Space  
Pavilion

**Date:** Thursday,  
July 12

**Time:** 5:30 – 8:00 p.m.

**Menu:** Hot dogs &  
fixins  
  
Ice cream  
sundaes

**Cost:** \$5/person  
8 & under free

Payable by  
cash or check  
at event.

**Reservations required**

**RSVP by July 6**

evlt@evlandtrust.org  
970-577-6837



©CharlieJohnson

“I often see raptors perching or soaring in the valley, but they can be hard to identify. The land trust summer picnic will have live raptors and experts on-hand to explain their differences; it will be fun for the whole family.”

Peter Sinnott, EVLT Board President

If there is one sound synonymous with wilderness, it's the keeeeer of a red-tailed hawk. Just hearing that call makes us think of desolate red-rock canyons or sweeping mountain ranges.

Most people think the keeeeer they hear above is the call of a bald eagle, not a red-tailed hawk. With overlapping ranges, it's common to see both bald eagles and red-tails in the same area, but their calls are very different.

Come learn the facts and get familiar with the raptors of the Estes Valley, at our summer picnic. Get up close and personal with these birds and learn how to better identify them in the wild. That way, the next time you watch your favorite spaghetti western, you won't be fooled!

**Reservations by July 6.**

# BALANCING WORKFORCE HOUSING AND LAND CONSERVATION IN ESTES PARK

Estes Park, like Colorado's Front Range, is growing rapidly and additional open space and workforce housing are scarce. Can workforce housing needs be met while preserving land with significant conservation values?

## Start with a Clear Vision

Decisions about the location of workforce housing are being made now. The development will often occur in open space. Some undeveloped areas have minimal conservation values while other open space provides important wildlife habitat or unimpeded scenic views for the public.

"I came to Estes Park for the first time as a 12-year-old Cheley Camper and was struck by the natural beauty, wildlife and enormous mountains. I want to make sure this valley remains one of the most beautiful places on earth." Robin Harding, EVLT Vice President

## Workforce Housing is a Park Issue

Without available workforce housing, our partners, such as the Town and the YMCA, are unable to attract quality employees. In the case of the Park and Rocky Mountain Conservancy, this affects their ability to steward our area's natural resources effectively.

"The Park needs additional housing in order to attract and retain staff; otherwise candidates will be forced to take a second job to live here. That's not sustainable." Darla Sidles, Superintendent of RMNP.

"Rocky is one of the premier national parks in the US, and when staff are able to live in or adjacent to the Park, it benefits the Park, the employee, and the community."

## Land Trust Can Help

It is important that the land trust have a voice regarding where workforce development does – or does not – occur. For instance, locating housing where important wildlife habitat and public view corridors are not impeded should be a factor.

Many communities across the country use Comprehensive Land Use Plans or other regional tools to direct development away from areas with sensitive natural resources, such as stream corridors and wetlands.

"I could see the land trust helping us identify these areas and placing them under a conservation easement while the Town identifies areas that are more suitable for development and may not make sense to preserve." Randy Hunt, Community Development Director

We can, and should strive to, have it all – new workforce housing in which people can afford to live and raise families, and the natural beauty that makes Estes Park one of the most beautiful places on earth, preserved forever.



The land trust can help the Town identify areas where conservation values should be preserved.



# COME HIKE WITH US!

Hiking is the most popular outdoor activity in Estes Park and some of the most beautiful land in the valley is under conservation easement with the land trust. The best way to appreciate land in the valley is to see it, and we recommend doing it on foot!

This summer, we're offering an exclusive opportunity to hike on the 463-acre Eagle Rock Conservation Easement. This private property is not typically open for hiking, but Jeff Liddle, Eagle Rock Head of School, is inviting our members to see it first hand.

*"In the early 1990s, the Honda Foundation began looking for the ideal location to build a residential high school that was easy on the land. We worked with the Town, the Estes Valley Land Trust, and others to tuck it in Estes Park, so it can be surrounded by wilderness." Jeff Liddle, Head of School*

The approximately 2-hour, moderate hike will showcase the eased land surrounding the campus. Jeff will lead the hike and discuss the mission of the residential school and some of its successes. It's not often that a local land trust can improve the lives of youth or help site a school campus in an environmentally friendly manner.

Come hike the beautiful Eagle Rock Conservation Easement.

## IF YOU GO

**Where:** Eagle Rock Conservation Easement

**Date:** Friday, June 22

**Time:** 9 a.m.

**Cost:** Free to EVLT Members

**Reservations required.**

Limited to 12 people.

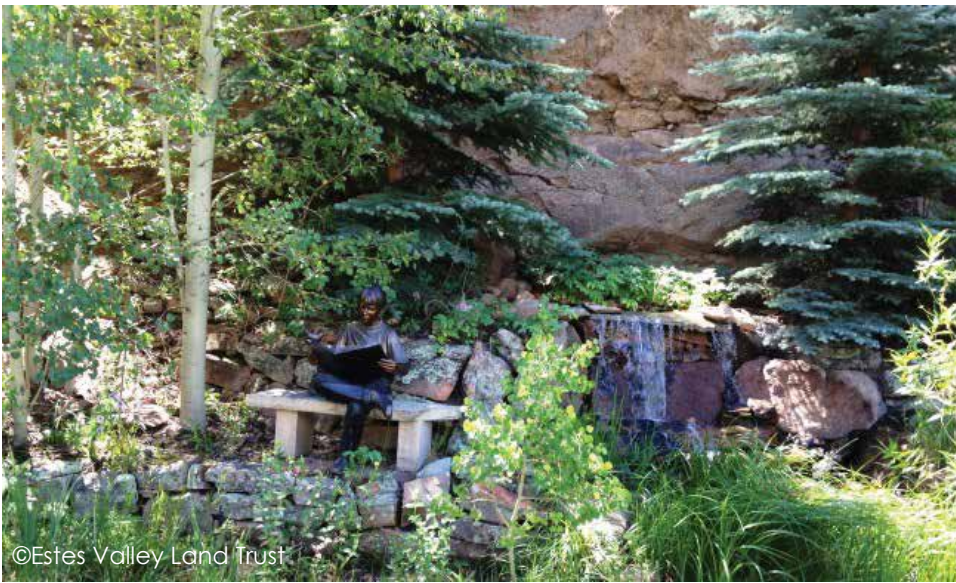
**Email [evlt@evlandtrust.org](mailto:evlt@evlandtrust.org) or call 970-577-6837 to RSVP.**



©James Frank

At 463 acres, the Eagle Rock CE is one of the land trust's largest and most stunning easements.





©Estes Valley Land Trust

The garden was flood damaged in 2013 and is filling in nicely with native plants.

## ENHANCE MRS. WALSH'S GARDEN – PURCHASE A BENCH

The Estes Valley Land Trust is well known for our beautiful bronze benches along the Riverwalk. Purchasing a bench to be installed in the garden is a wonderful way to memorialize a loved one and support the land trust. If you would like to learn more, please contact us.

## GATE CLOSED, BUT PUBLIC ALWAYS WELCOME

The secret is out. Mrs. Walsh's Garden may be one of the best places in town to relax and learn about native plants. The garden is named after Mrs. Winifred "Peggy" Walsh (1886-1953), who lived in Estes Park and was an avid wildflower enthusiast.

This conservation easement property is like no other. The gate may be closed, but the public is always welcome (just close the gate behind you to keep elk and deer out). Take a stroll down Elkhorn Avenue, bring a book and enjoy Mrs. Walsh's Garden. The garden is located across from the Bighorn Restaurant.

## GET TO KNOW KENZIE SCHMITT

The land trust hired a new Stewardship Intern. Jeffrey sat down with Kenzie for a short interview.

**Jeffrey:** Where is your favorite place to recreate?

**Kenzie:** My favorite place is Banff and Jasper National Parks in Canada. I backpacked there in 2017 and it was one of the best trips I can remember - the weather was perfect, the mountains were beautiful, and I learned more about myself on that trip than any other.

**Jeffrey:** Why a career in conservation?

**Kenzie:** I was lucky enough to spend my youth playing outside, exploring the national parks and protected lands across the country with my family, getting dirty and having fun. When I realized that those lands are in danger of overuse and climate change, I enrolled at Colorado State University and pursued a Natural Resources degree.

**Jeffrey:** Are you excited to work with the Estes Valley Land Trust?

**Kenzie:** I'm excited to get to know the land trust community in Estes Park. The people are caring and love living here. Getting to work with them will be a pleasure!

Kenzie starts on May 25 and will coordinate the 2018 monitoring season. Stop by and say hi!



Kenzie is trekking to Estes Park to assist our volunteer monitors.



# FIRST CLASS MAIL

FIRST CLASS  
MAIL  
U.S. POSTAGE  
**PAID**  
PERMIT #224  
ESTES PARK, CO

1191 Woodstock Dr. #5  
PO Box 663  
Estes Park, CO 80517  
970-577-6837  
evlt@evlandtrust.org  
www.evlandtrust.org



<<FirstName>> <<LastName>>  
<<BusinessName>>  
<<ADDRESS>>  
<<CITY>> <<STATE>> <<ZIP>>

## THANK YOU, PIET AND HELEN HONDIUS!

Piet and Helen Hondius have been making a difference in Estes Park for decades. Recently, they made a bequest to the Estes Valley Land Trust to help ensure we preserve nearly 10,000 acres of land forever. Our planned giving program, named the Forever Estes Circle, allows individuals an opportunity to have a lasting impact on the Estes Valley by supporting conservation.

“Piet and Helen are founding members of the Estes Valley Land Trust and have helped preserve thousands of acres of land. The Board of Directors is extremely grateful for their recent planned gift.” Leo Weber, Honorary Board Member

For more information about the Forever Estes Circle, please contact Jeffrey Boring at 970-577-6837 or visit [evlandtrust.org/planned-giving](http://evlandtrust.org/planned-giving).



Piet and Helen enjoyed Hermit Park Open Space last fall.